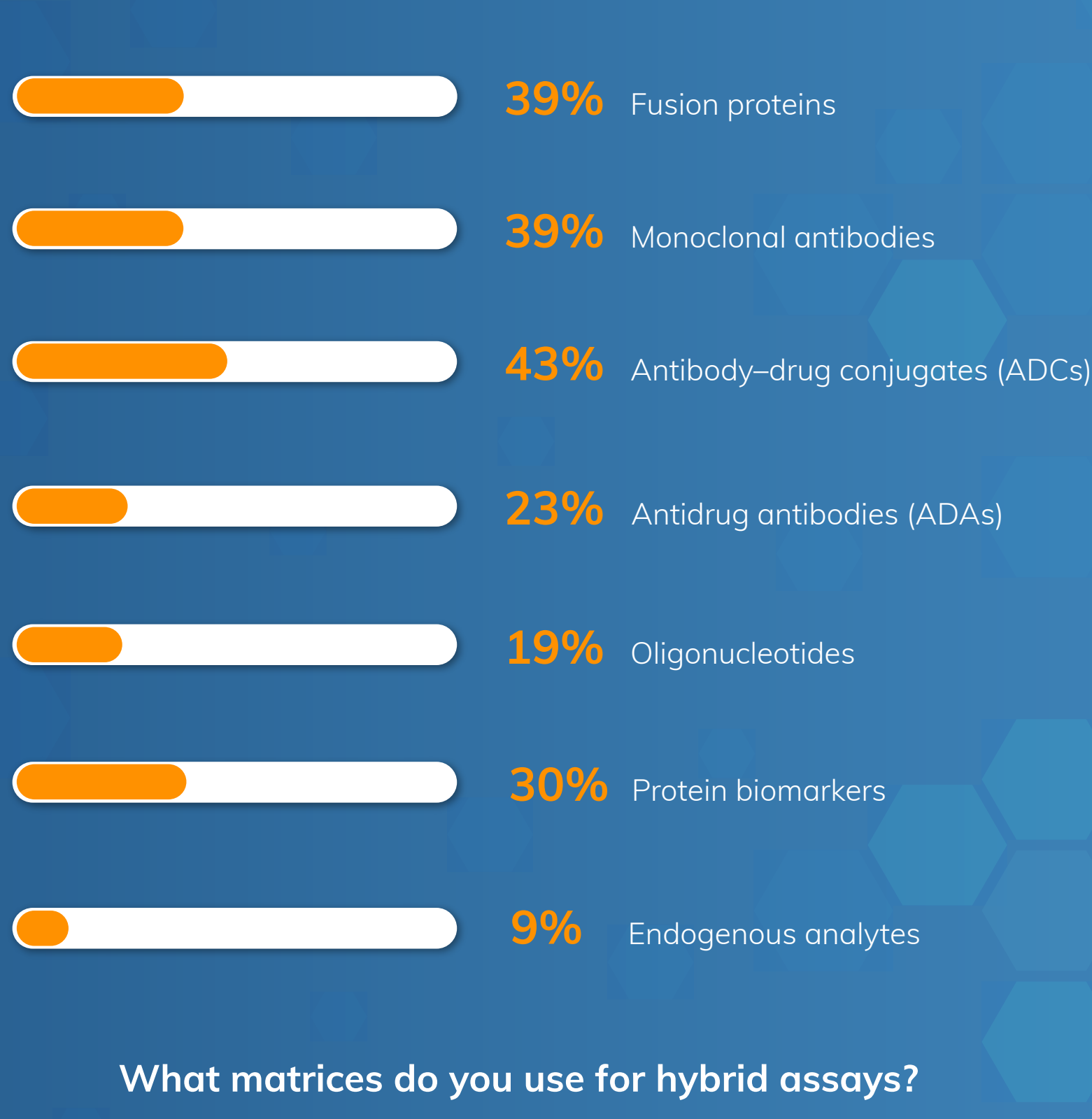


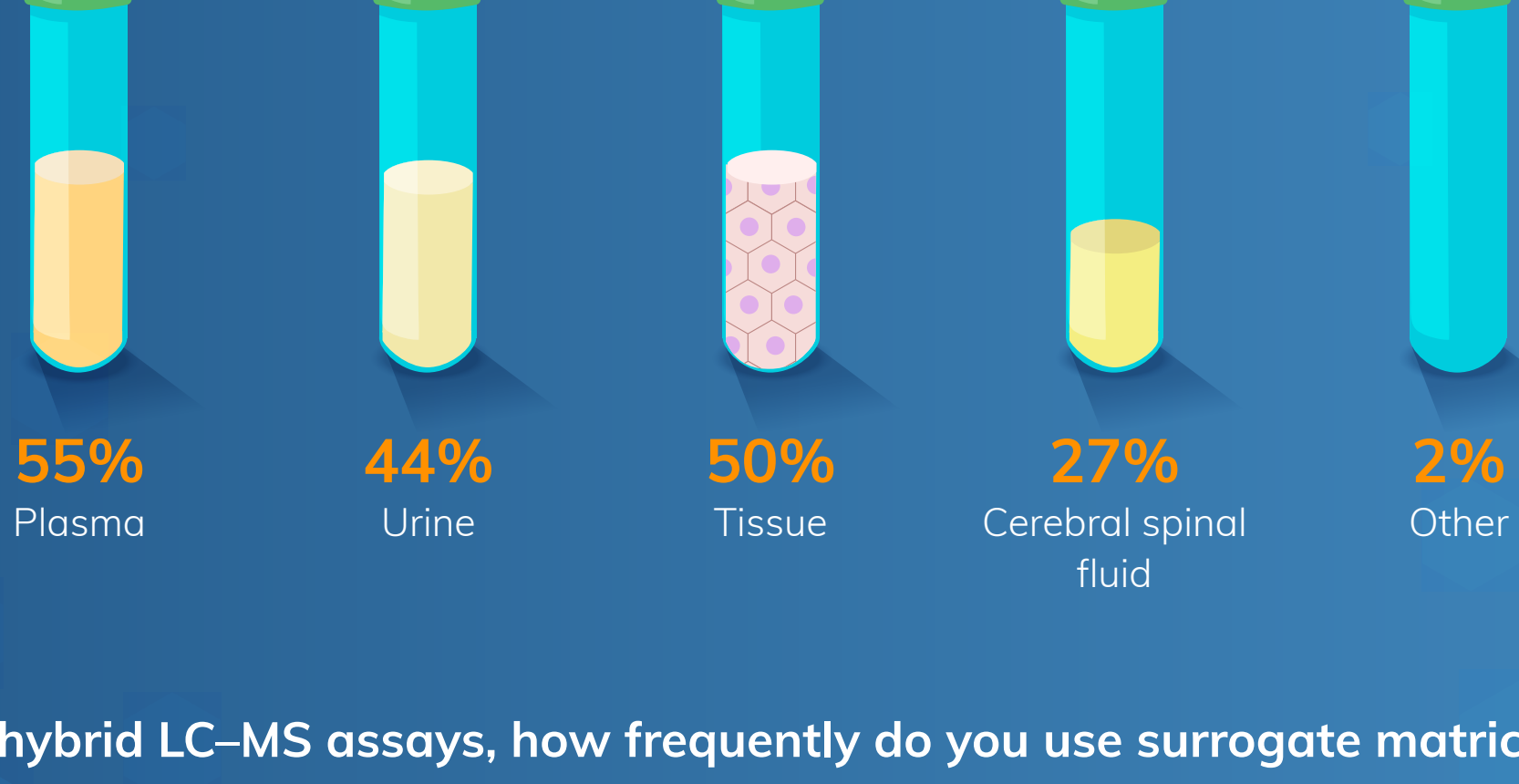
Considerations around validation of methods for hybrid LC-MS/MS assays using non-primary matrices

TRENDS IN HYBRID LC-MS/MS ASSAYS

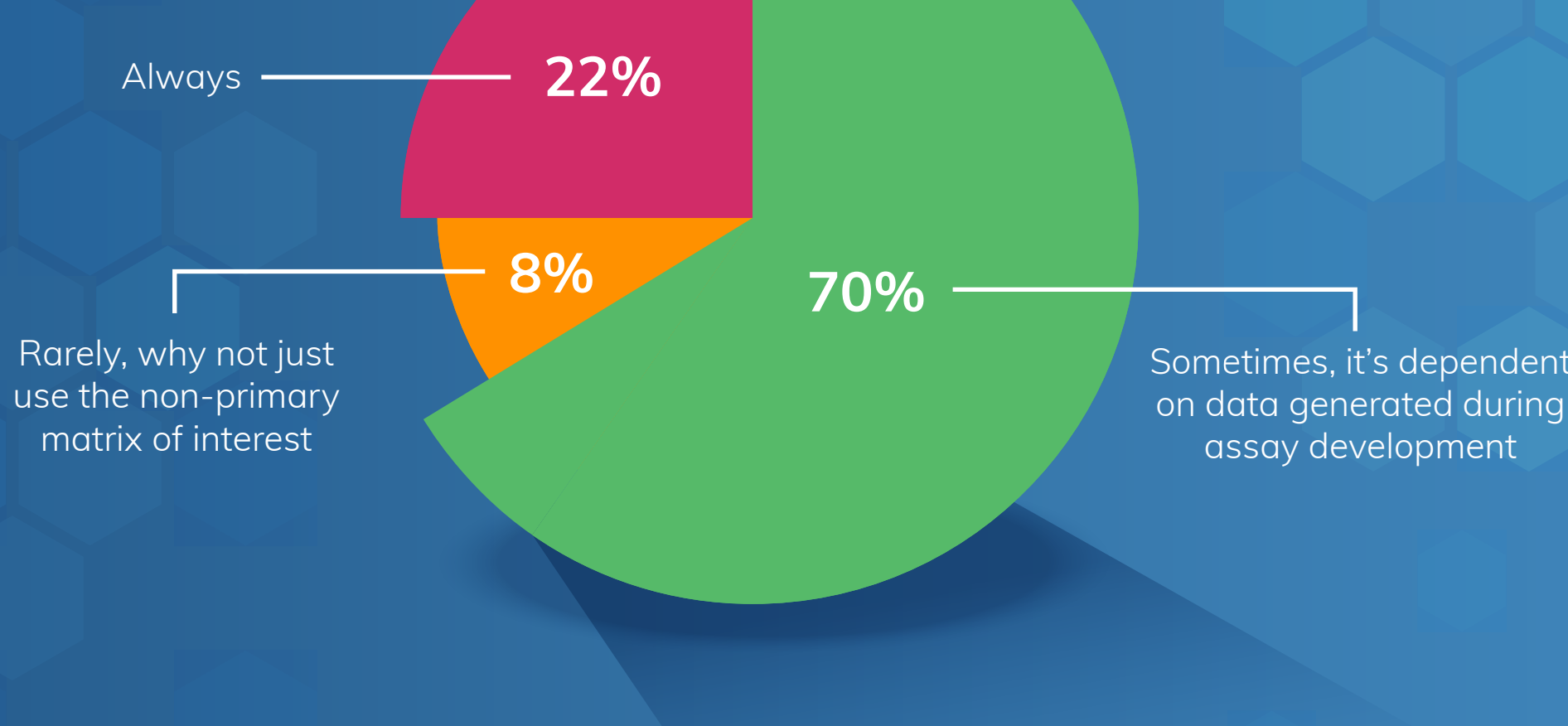
What molecules do you analyze using hybrid LC-MS/MS?



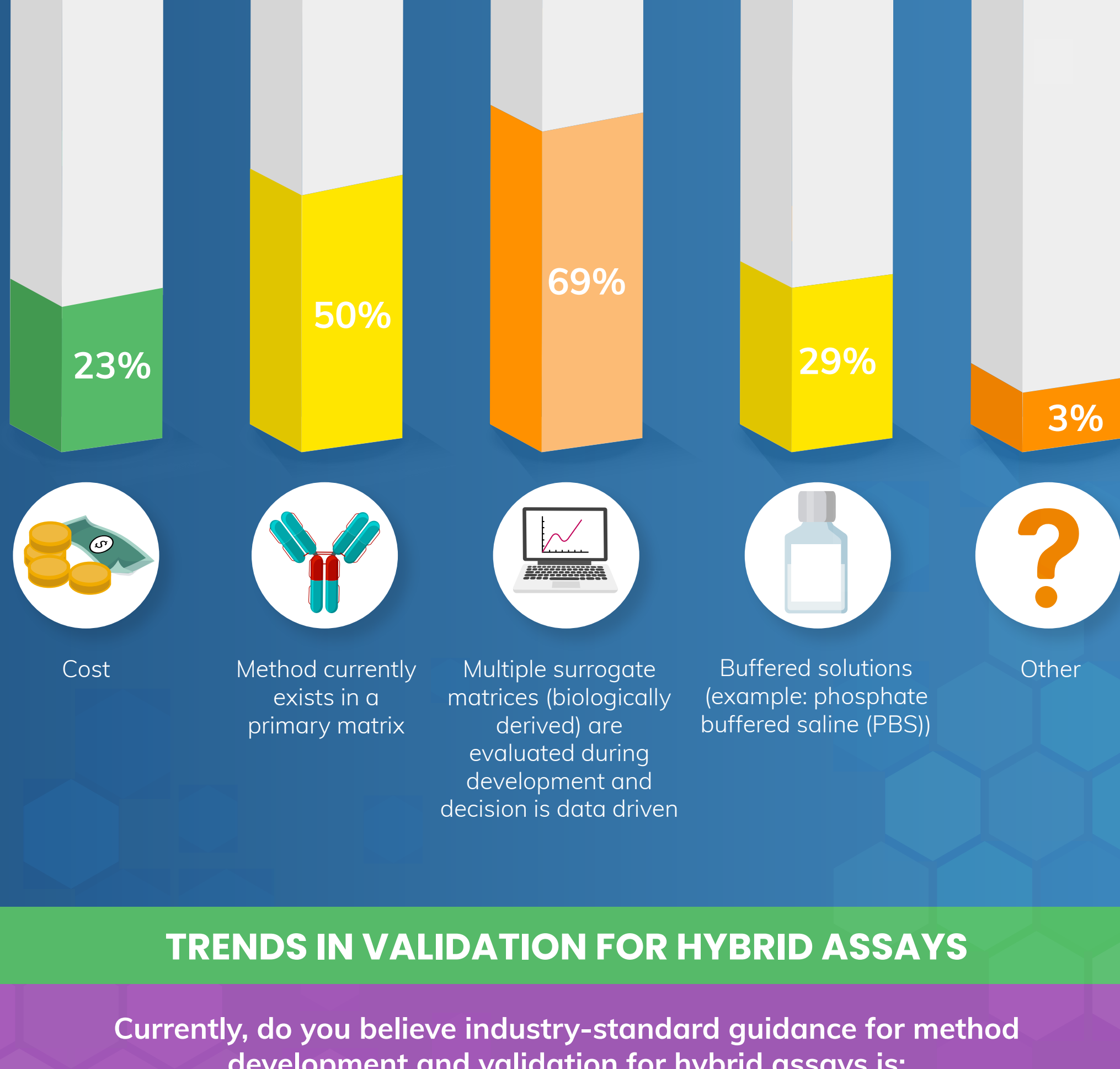
What matrices do you use for hybrid assays?



For hybrid LC-MS assays, how frequently do you use surrogate matrices?



What process goes into how you select a surrogate matrix?

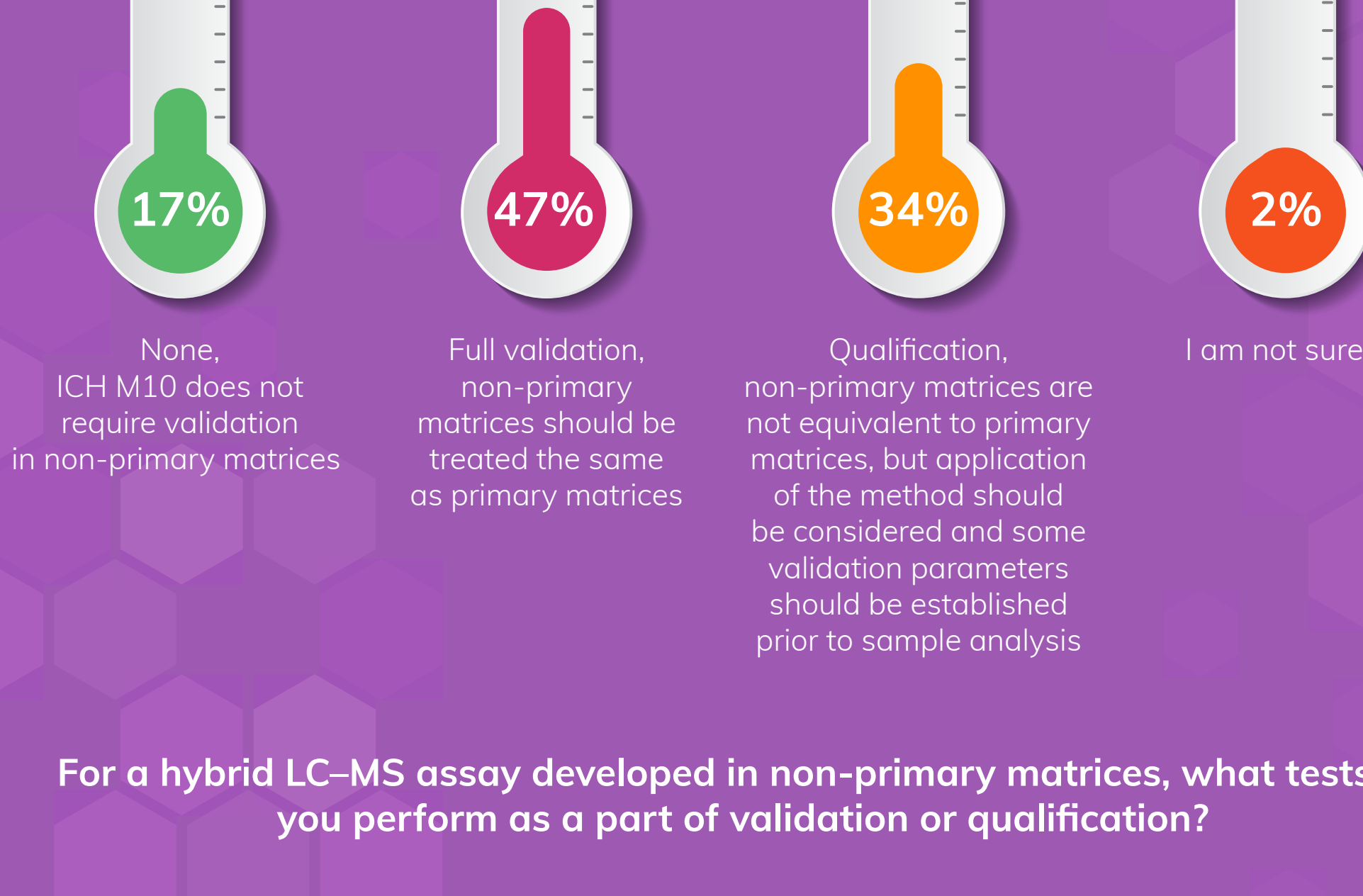


TRENDS IN VALIDATION FOR HYBRID ASSAYS

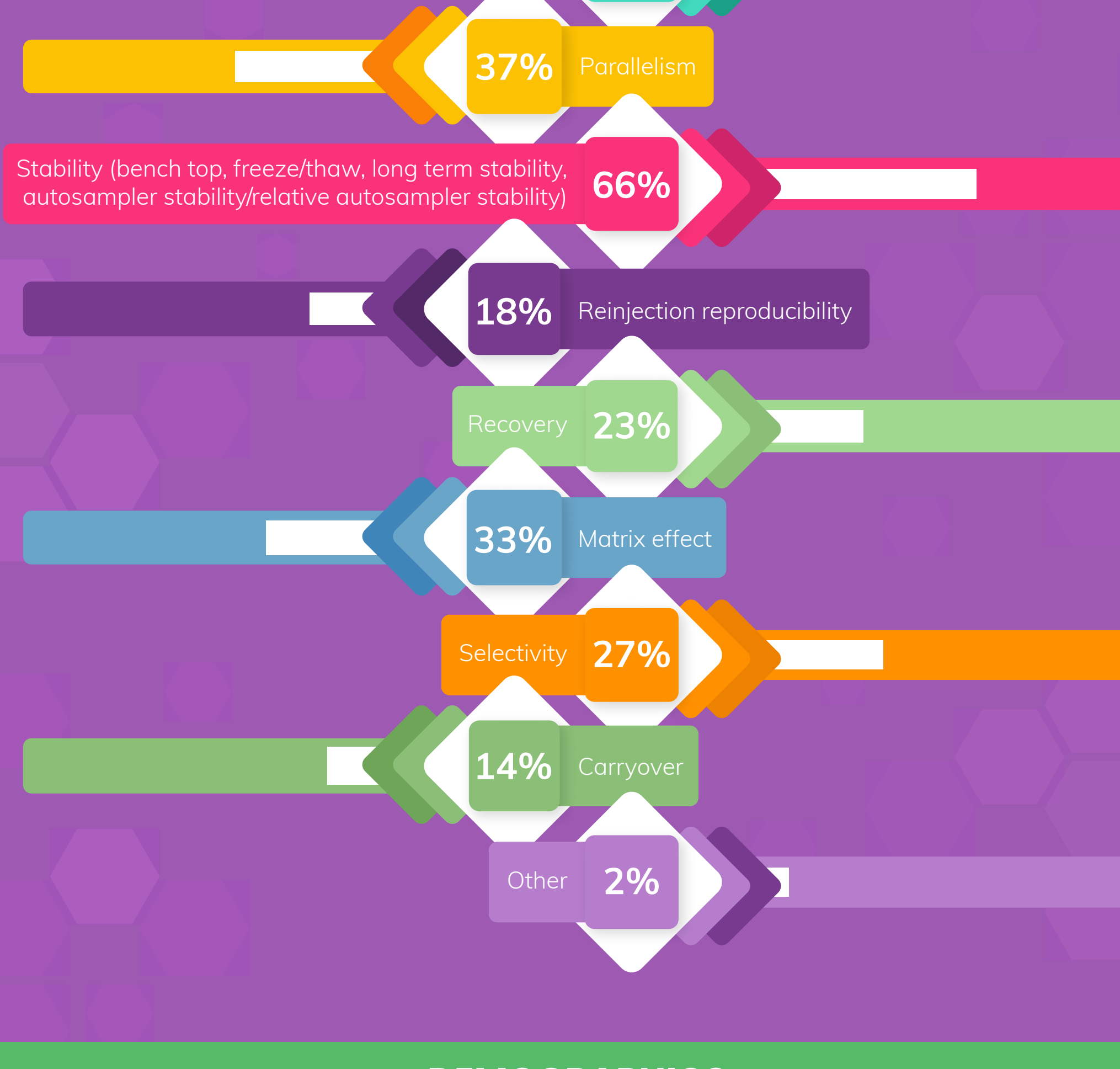
Currently, do you believe industry-standard guidance for method development and validation for hybrid assays is:



What degree of validation do you need for non-primary matrices?



For a hybrid LC-MS assay developed in non-primary matrices, what tests do you perform as a part of validation or qualification?

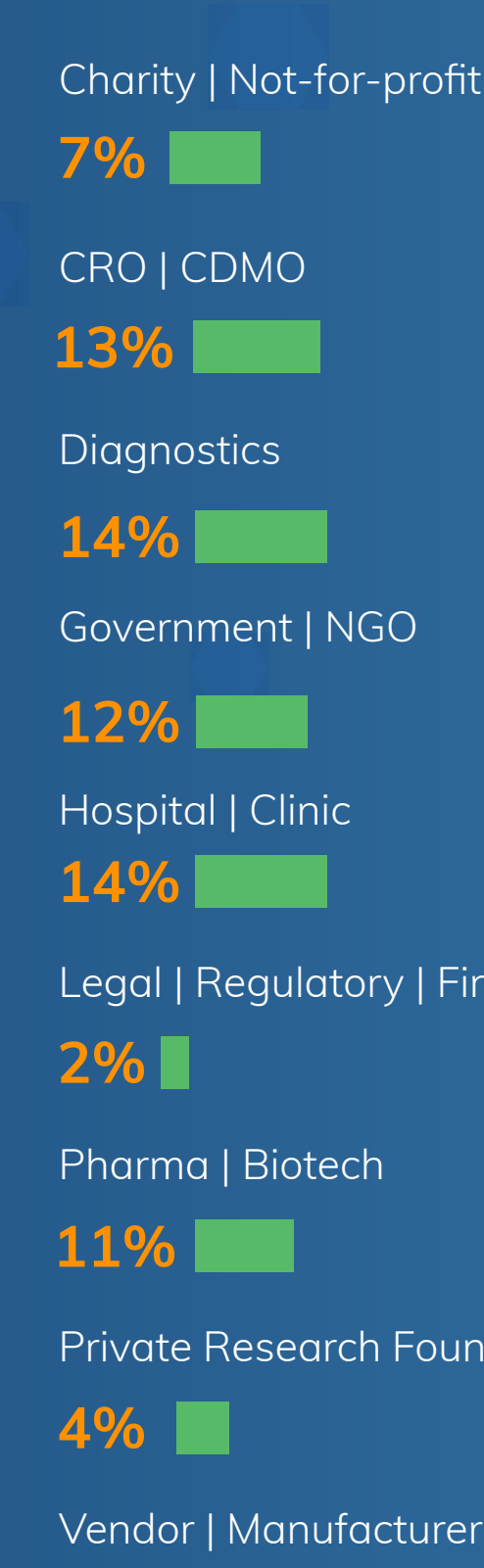


DEMOGRAPHICS

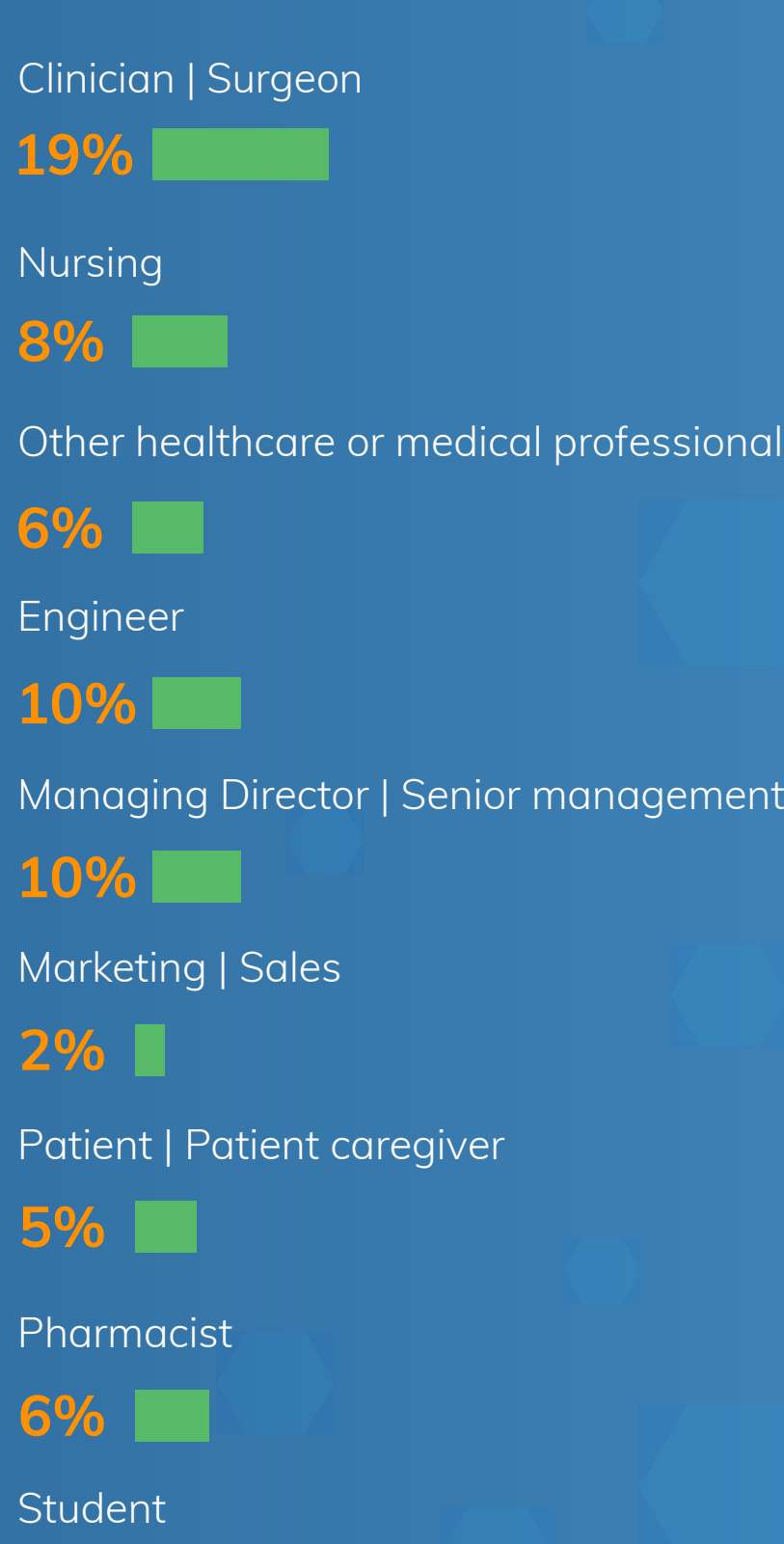
Geography



Organization



Job title



This infographic has been created as part of a Bioanalysis Zone feature in association with ICON.